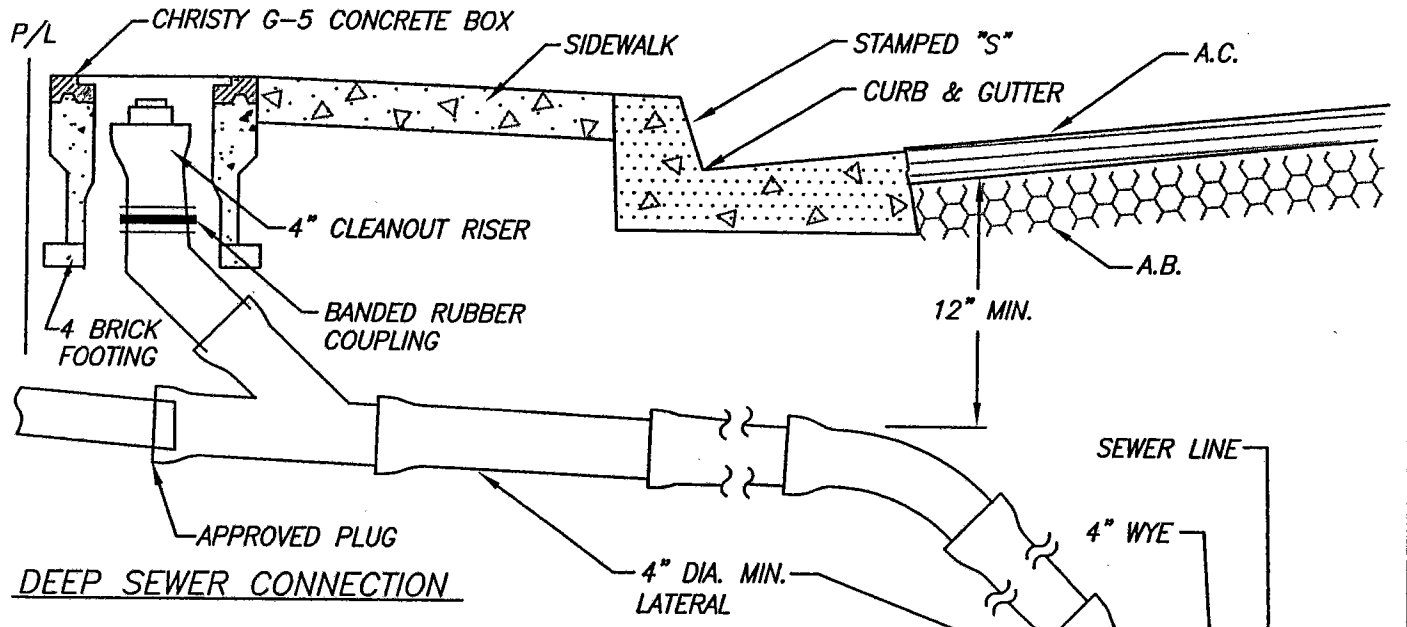


STANDARD CONNECTION


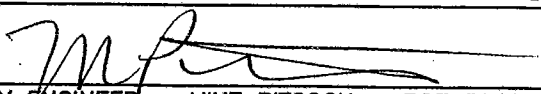


DEEP SEWER CONNECTION

NOTES:

1. IF DEPTH FROM GUTTER FLOW LINE TO TOP OF SEWER PIPE IS LESS THAN 12", DUCTILE IRON PIPE SHALL BE USED IN PLACE OF V.C.P.
2. A LETTER 'S' (4" HIGH) SHALL BE STAMPED ON CURB FACE OVER CONNECTION PIPE.
3. RESIDENTIAL CONNECTIONS IN STREETS SHALL BE INSTALLED TO PROPERTY LINE.
4. CONNECTIONS IN ALLEYS SHALL BE INSTALLED TO PROPERTY LINE.
5. SEWER CONNECTION SHALL BE AS PER STANDARD SPECIFICATIONS. MINIMUM DIAMETER SHALL BE 4". JOINTS SHALL BE JOINED WITH WEDGELOCK, SPEED SEAL OR OR APPROVED EQUAL. REFER TO STD. DRAWING S-1.
6. CHRISTY BOX TO BE PLACED 12 INCHES BACK OF SIDEWALK ON PROPERTY LINE SIDE.

SEWER CONNECTIONS

	DRAWN BY: ZHL	CITY OF TURLOCK	DRAWING NO.: S-6
	SCALE: NONE	APPROVED BY: 	COUNCIL APPROVAL
	CHECKED BY: EAP	CITY ENGINEER - MIKE PITCOCK - RCE 52694	MAR. 25-08